



TAPE LABEL GENERATOR SOFTWARE

For use with Data I/O's TaskLink for Windows (TLWIN):

Design and print labels for devices output to tape media.

The common medium for delivery of programmed devices to the SMT assembly line is tape (reel). In order to simplify coordination of offline programming processes with manufacturing requirements, the Tape Label Generator facilitates the identification of programmed devices including the Task information used to program the blank devices.

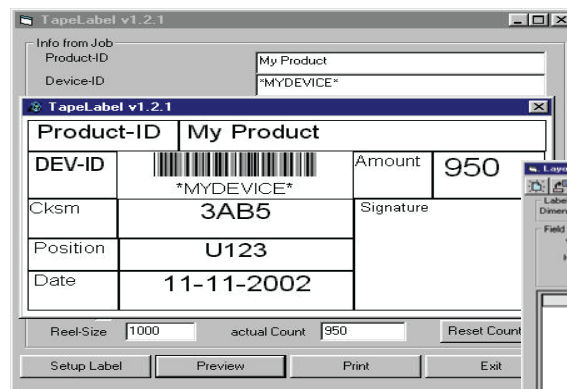
The Tape Label Generator provides an important part of the audit trail of programmed devices since the labeled reel contents are easily known and can be bar code scanned.

Benefits

- Design and print labels:
 - up to 8 different fields
 - up to 4 fields pre-defined
 - up to 4 fields at run time
- Six variables including:
 - Checksum
 - Job Name
 - Date
 - Time
 - Device Name
 - Counter
- Simple label setup screens
- Label dimensioning
- Font and size selection
- Bar code support

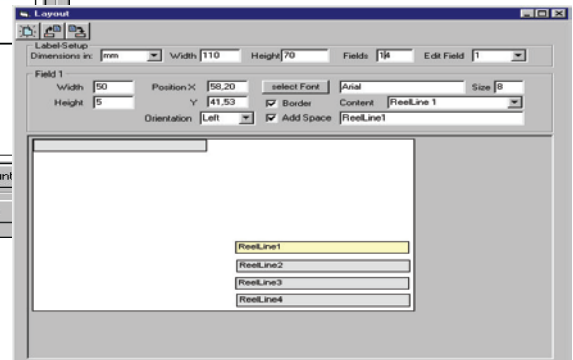
DATA I/O CORPORATION

- Redmond, WA
- www.dataio.com
- info@dataio.com
- +1 800-3-DATAIO



(Above) Sample of a custom label designed and generated for printing.

(Below) Sample label setup and fields for four print lines on the label.



EXAMPLE LABEL PRINTERS

- Lasermark
- Synrad
- Synrad_Digital
- RoFin_Sinar
- M&R
- M&R + Tape
- Brady_Apollo

REQUIREMENTS

- PC
- Windows driver for Label printer (installed on the PS systems)
 - Label printed set as default printer
 - Bar code fonts installed on PS the system
 - Tape label software must be installed on PS system (AHX00 folder)